

**Site #:** 30  
**Site Name:** The Cove (Des Moines)

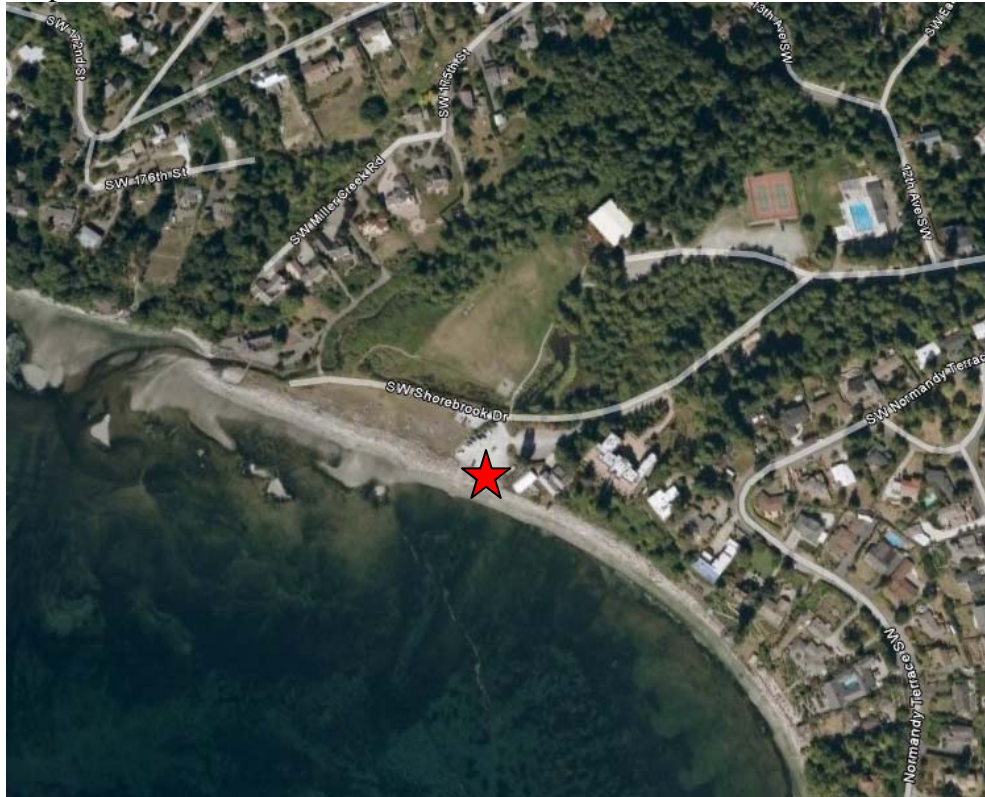
**County:** King  
**City:** Seattle

**Location:** At water access from dirt parking lot at top of small craft loading ramp (cement).

**Access:** Turn left onto Shorebrook drive, go through 1st stop sign and continue on past Normandy Park Swim club and "The Cove" sign parking entrance. After passing both of these entrances, the road will take you to the Beach Parking lot.

**Notes (e.g. special considerations):** can drive right to site.

Map:



272 meters to cement bulkhead on other side large stone bulkhead

