

Site #: 89

County: Island **Town:** Coupeville

Site Name: Fort Casey State Park

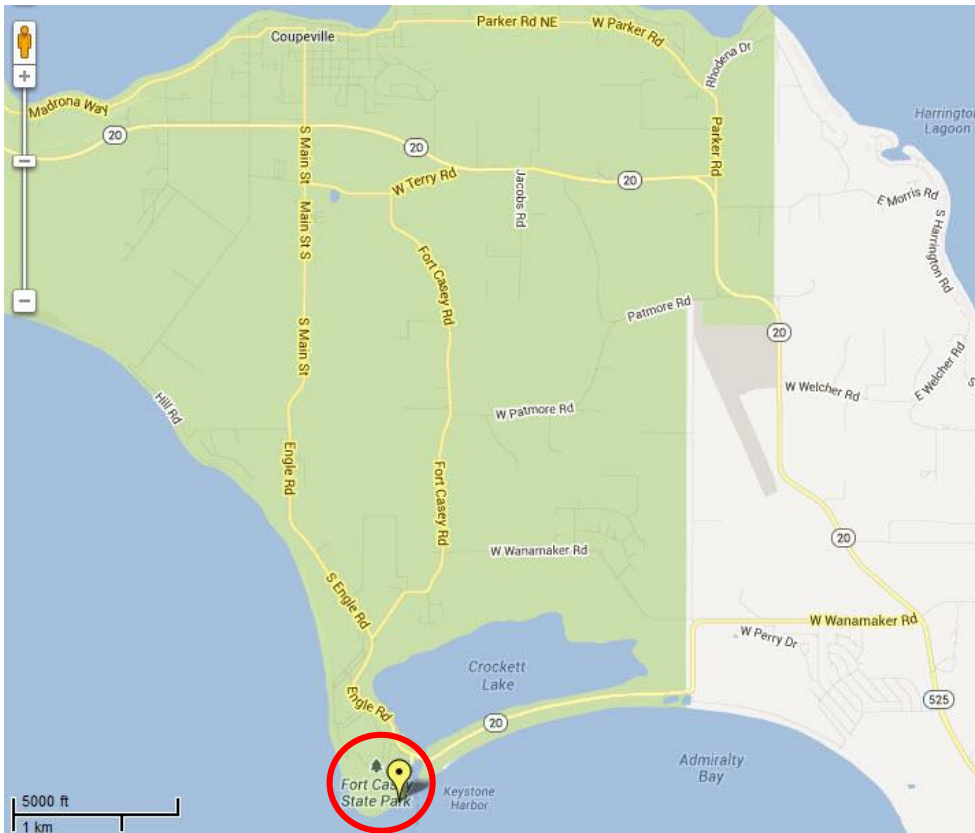
GPS: N48° 09.346, W122° 40.464

Location: Fort Casey State Park. From Coupeville, head south on N Main Street, continue onto S Engle Road for 3.2 miles. Turn right to enter Fort Casey State Park and take the main road through the park, past the derelict fortifications, then take the first left that leads down to the RV Park next to the beach. Park in the small lot at the apex of the loop. The survey location is situated at the end of a small, nearby path that leads to the beach.

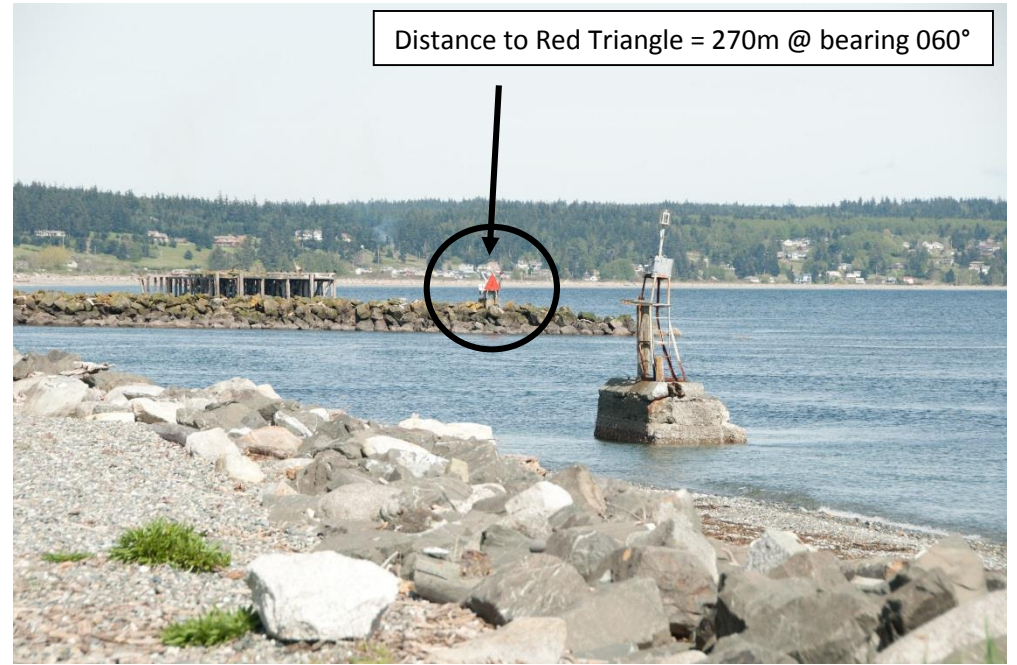
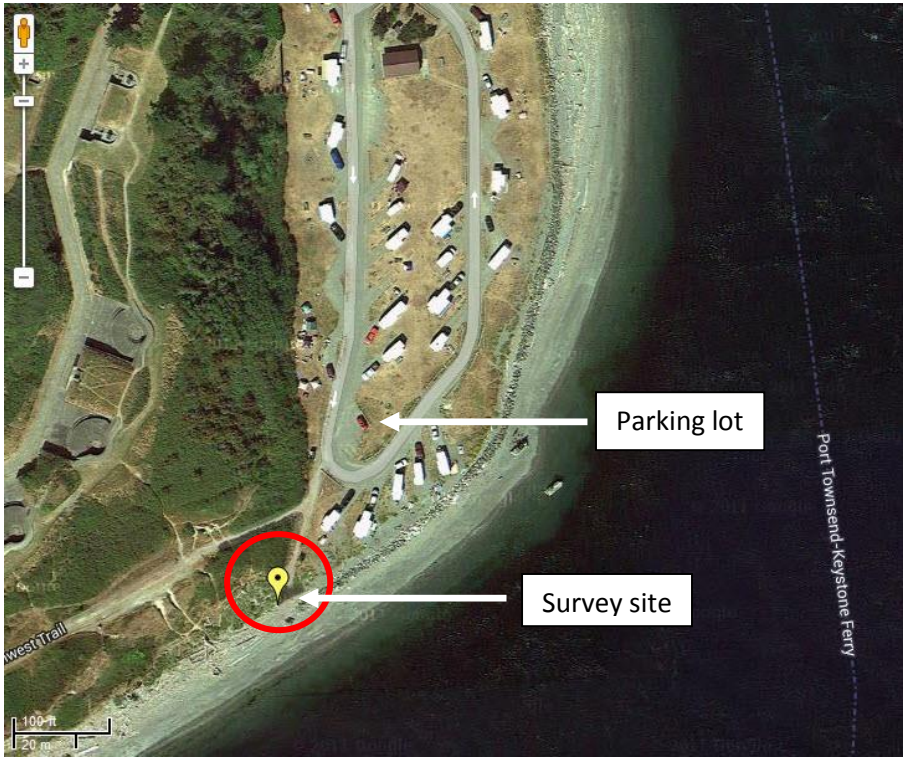
Access: There is a small parking lot located at the apex of the loop before the road turns the corner. There are spaces for 3 or 4 cars, but due to the limited space may fill up.

Notes: Discovery Pass required. Passes can be purchased from various outlets and [online](#). There is a short path that leads from the RV Park to the beach very close to the parking lot. Walk to the end of this path and conduct the survey (locate the tripod) to the left of the path (facing the water) just after the long grass, where there is a flat area of smaller pieces of driftwood, before the line of larger boulders.

Map:



Images:



Position of surveyor/scope tripod

